

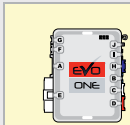
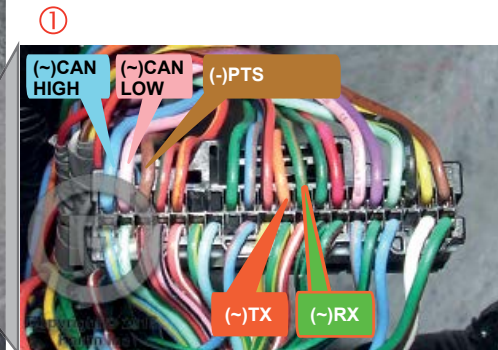
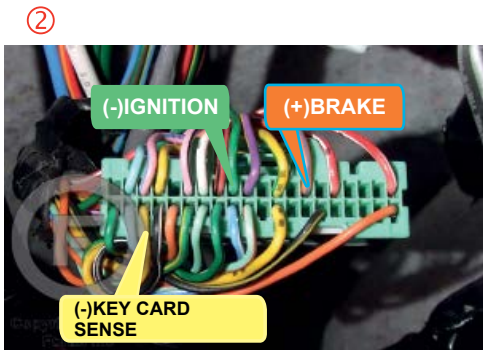
REGULAR INSTALLATION

ADDENDUM - SUGGESTED WIRING CONFIGURATION

VEHICLE	YEARS	Vehicle functions supported in this diagram (functional if equipped)								
		Immobilizer bypass	Lock	Unlock	Trunk release	Tachometer	Door Status	Trunk Status	Hand-Brake Status	Foot-Brake Status
<b>RENAULT</b> Koleos	Key Card 2009-2015	•	•	•	•	•	•	•	•	•



At UCH, under Dashboard, driver side



**3**

MINIMUM

**BYPASS**  
FIRMWARE VERSION

**72.[22]**

NISSAN/INFINITI MINIMUM

This manual may change without notice.  
www.fortinbypass.com for latest version.

**NOTES**

The unlock function will not be functional If the doors are locked with the key card.



**Parts required** (Not included)

1x 10 Amp fuse



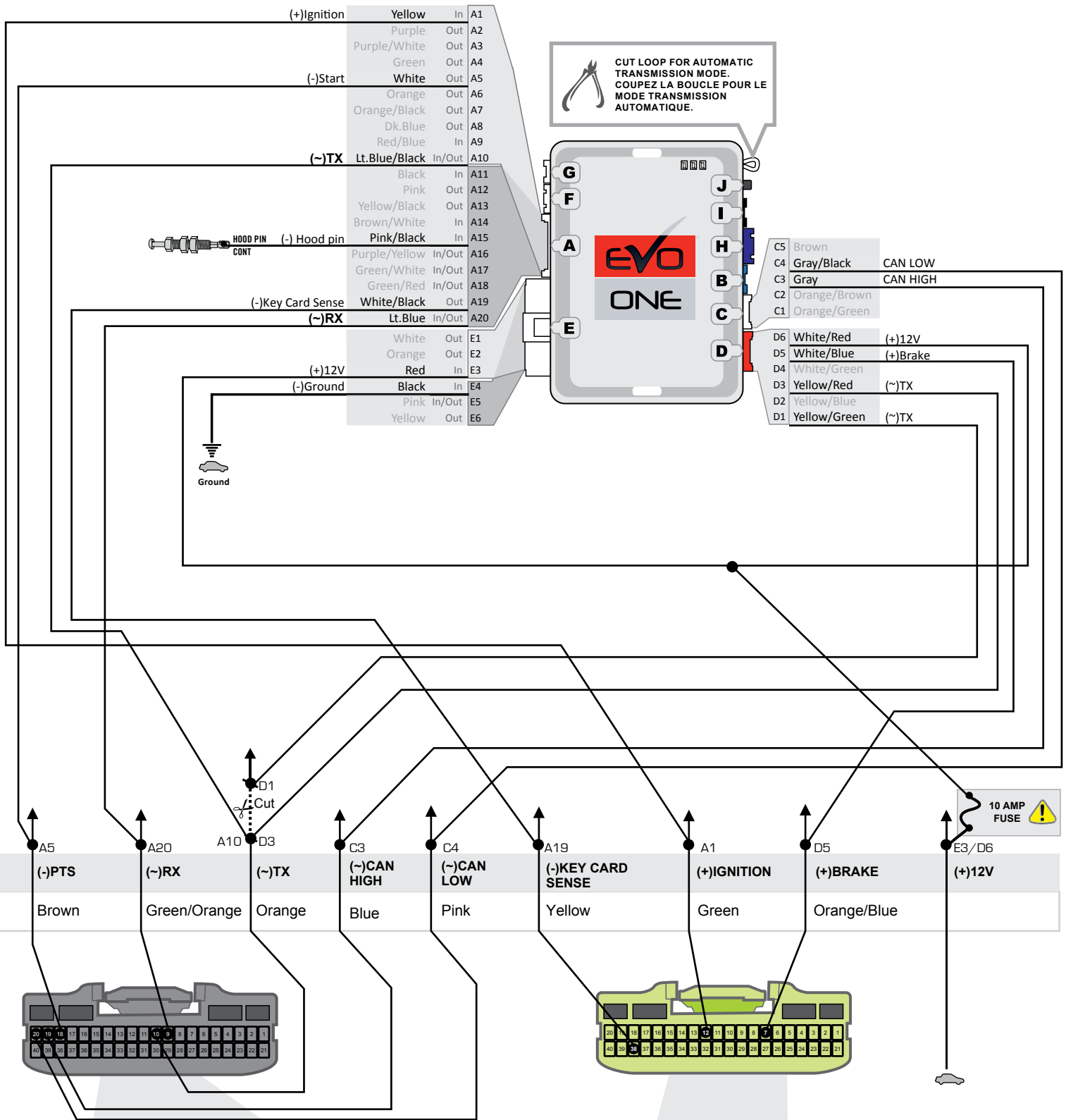
**FLASH LINK UPDATER 2**

1X

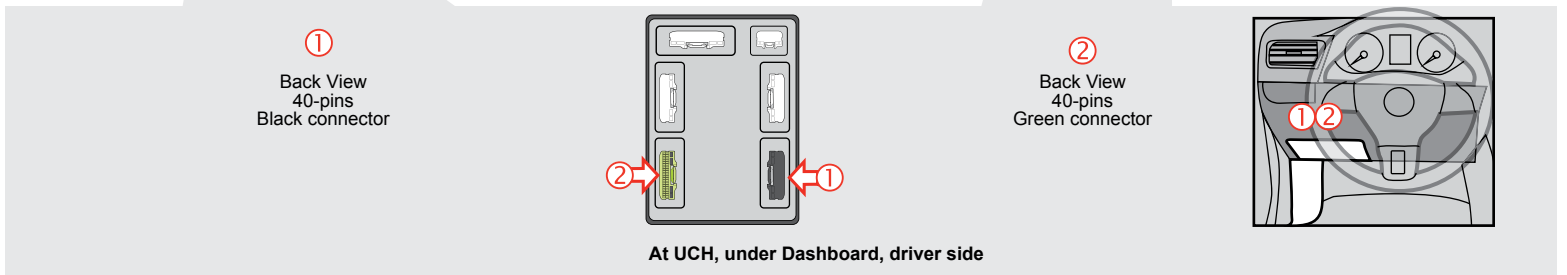
Microsoft Windows Computer & Internet connection



WIRING CONNECTION

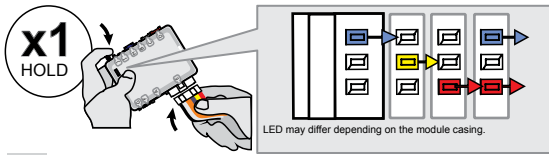


CUT LOOP FOR AUTOMATIC TRANSMISSION MODE.  
 COUPEZ LA BOUCLE POUR LE MODE TRANSMISSION AUTOMATIQUE.



**KEY BYPASS PROGRAMMING PROCEDURE 1/2**

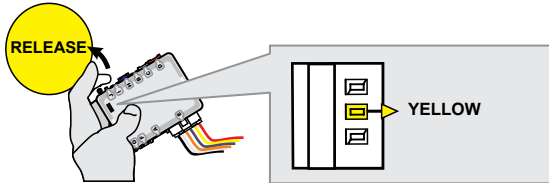
1



**Press and hold** the programming button:  
**Connect** the 6-PIN Main harness (White connector).

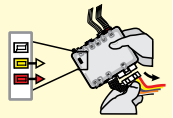
↳ The Blue, Red, Yellow and Blue & Red LEDs will alternatively illuminate.

2

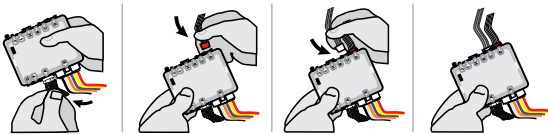


**Release** the programming button when the LED is **YELLOW**.

If the LED is not solid **YELLOW** **disconnect** the 6-Pin connector (Main-Harness) and go back to step 1.

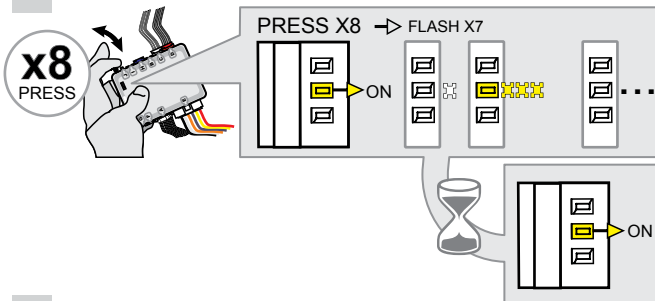


3



**Insert** the required remaining connectors.

4

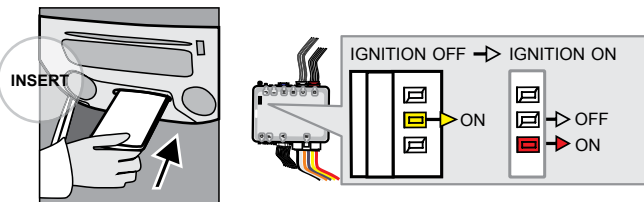


**Press and release** the programming button 8 times (8x).

↳ The **YELLOW** LED will alternate between 7x flashes and a pause.

↳ Wait until the **YELLOW** LED turns ON.

5



**Insert** the key card in the key port.

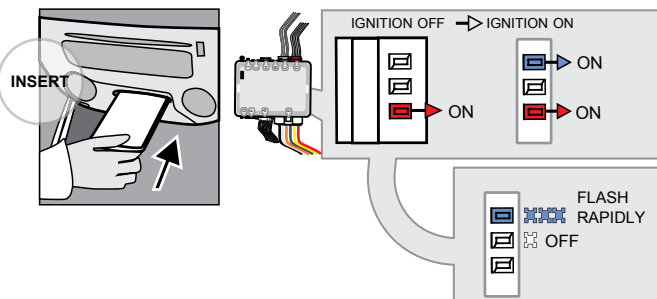
↳ The **RED** LED will turn ON.  
 ↳ The **YELLOW** LED turns OFF.

6



**Remove** the card key from the key port.

7



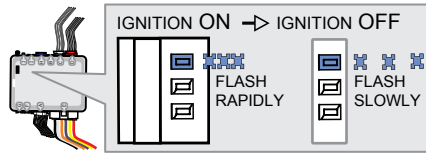
**Insert** the key card in the key port.

↳ The **RED** LED will turn OFF.

↳ The **BLUE** LED will Flash rapidly.

**KEY BYPASS PROGRAMMING PROCEDURE 2/2**

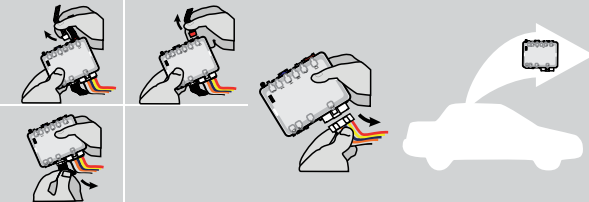
8



**Remove** the card key from the key port.

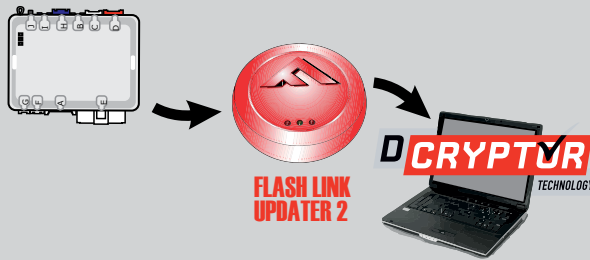
↳ the **BLUE LED** flash slowly.

9



**Disconnect** all connectors and after the 6-Pin (Main-Harness) connector.

10



**Connect** the module to the FLASH LINK UPDATER 2 and visit the DCryptor menu in the Flash-Link Manager.

Parts required (not included)



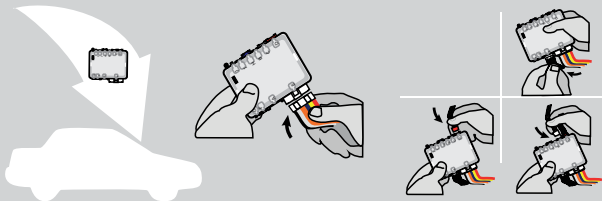
**FLASH LINK UPDATER 2**

**FLASH LINK MANAGER** SOFTWARE



Microsoft Windows Computer with Internet connection

11



**AFTER DCRYPTOR PROGRAMMING COMPLETED**  
Go back to the vehicle and **reconnect** the 6-Pin (Main-Harness) connector and after all the remaining connector.



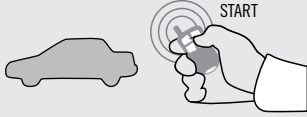


The module is now programmed.


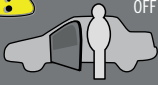


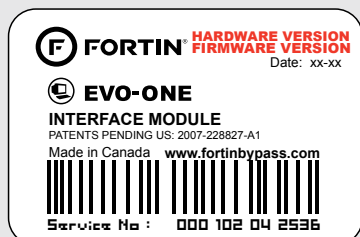
**REMOTE STARTER / ALARM VERIFICATION PROCEDURE**

Test the remote starter. Remote start the vehicle.

REMOTE STARTER FUNCTIONALITY

 <p>All doors must be closed.</p> <p><b>Remote start</b> the vehicle.</p>	 <p><b>Unlock</b> the doors with either:</p> <ul style="list-style-type: none"> <li>• The remote-starter remote</li> <li>• Or the door's proximity bouton</li> <li>• Or the proximity remote</li> </ul>	 <p><b>Enter</b> the vehicle with the Intelligent (Access Key)</p> <p><b>Insert</b> the key card in the key port.</p> <p>The vehicle can now be put in to gear and driven.</p>
--	--	--

  If the vehicle is not unlocked the module will shut down the remote-starter and the vehicle as soon as any door is opened.



Module label

### Notice: Updated Firmware and Installation Guides

Updated firmware and installation guides are posted on our web site on a regular basis. We recommend that you update this module to the latest firmware and download the latest installation guide(s) prior to the installation of this product.

### WARNING

The information on this sheet is provided on an (as is) basis with no representation or warranty of accuracy whatsoever. It is the sole responsibility of the installer to check and verify any circuit before connecting to it. Only a computer safe logic probe or digital multimeter should be used. FORTIN ELECTRONIC SYSTEMS assumes absolutely no liability or responsibility whatsoever pertaining to the accuracy or currency of the information supplied. The installation in every case is the sole responsibility of the installer performing the work and FORTIN ELECTRONIC SYSTEMS assumes no liability or responsibility whatsoever resulting from any type of installation, whether performed properly, improperly or any other way. Neither the manufacturer or distributor of this module is responsible of damages of any kind indirectly or directly caused by this module, except for the replacement of this module in case of manufacturing defects. This module must be installed by qualified technician. The information supplied is a guide only. This instruction guide may change without notice. Visit [www.fortinbypass.com](http://www.fortinbypass.com) to get the latest version.

Copyright © 2006-2014, FORTIN AUTO RADIO INC ALL RIGHTS RESERVED PATENT PENDING



### TECH SUPPORT

Tél: 514-255-HELP (4357)  
1-877-336-7797



### ADDENDUM GUIDE

[www.fortinbypass.com](http://www.fortinbypass.com)

WEB UPDATE

