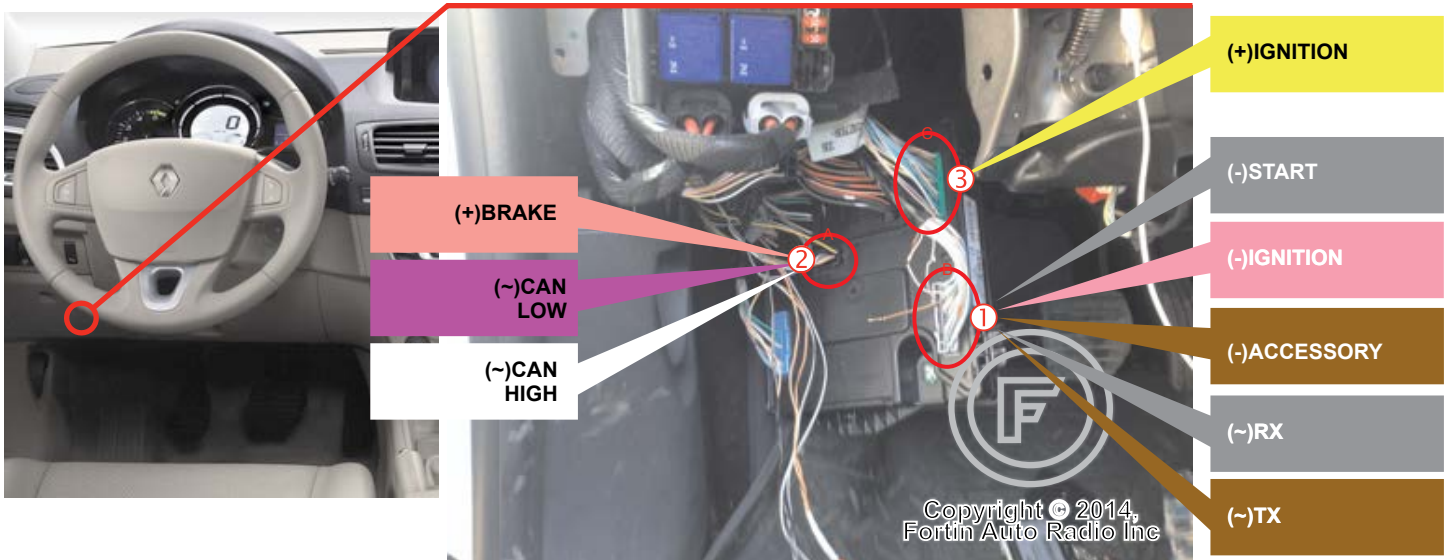


REGULAR INSTALLATION

ADDENDUM - SUGGESTED WIRING CONFIGURATION

VEHICLE	YEARS	Vehicle functions supported in this diagram (functional if equipped)								
		Immobilizer bypass	Lock	Unlock	Trunk release	Tachometer	Door Status	Trunk Status	Hand-Brake Status	Foot-Brake Status
RENAULT										
Fluence	Key 2009-2015	•	•	•	•	•	•	•	•	•
Megane III	Key 2009-2015	•	•	•	•	•	•	•	•	•
Scenic III	Key 2009-2015	•	•	•	•	•	•	•	•	•

At UCH, under Dashboard, driver side



	3 MINIMUM	BYPASS FIRMWARE VERSION 72.[22] NISSAN/INFINITI MINIMUM	This manual may change without notice. www.fortinbypass.com for latest version.
--	---------------------	--	--



Parts required (Not included)

- 1x 10 Amp fuse
- 2x 1 AMP Diode

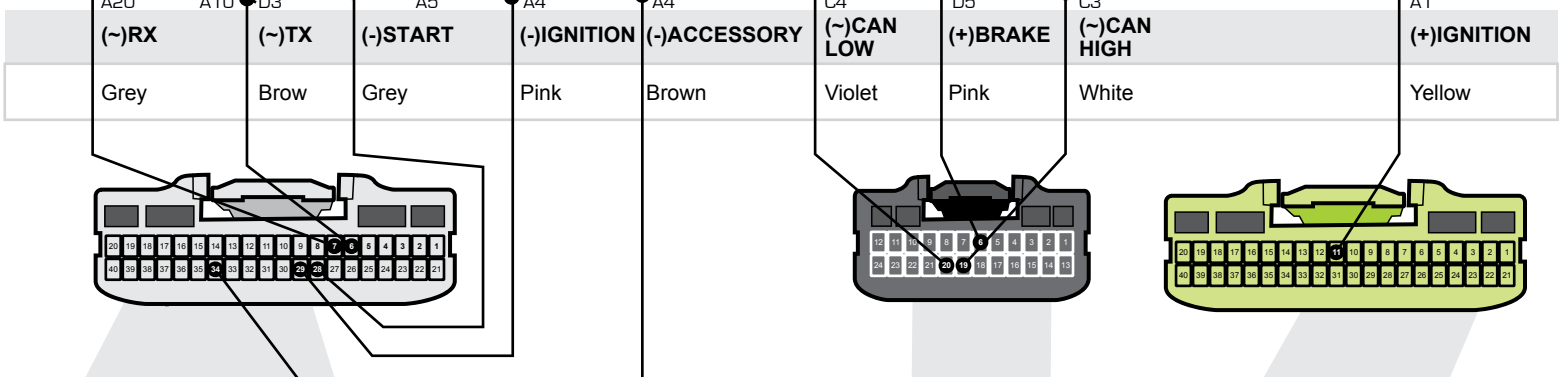
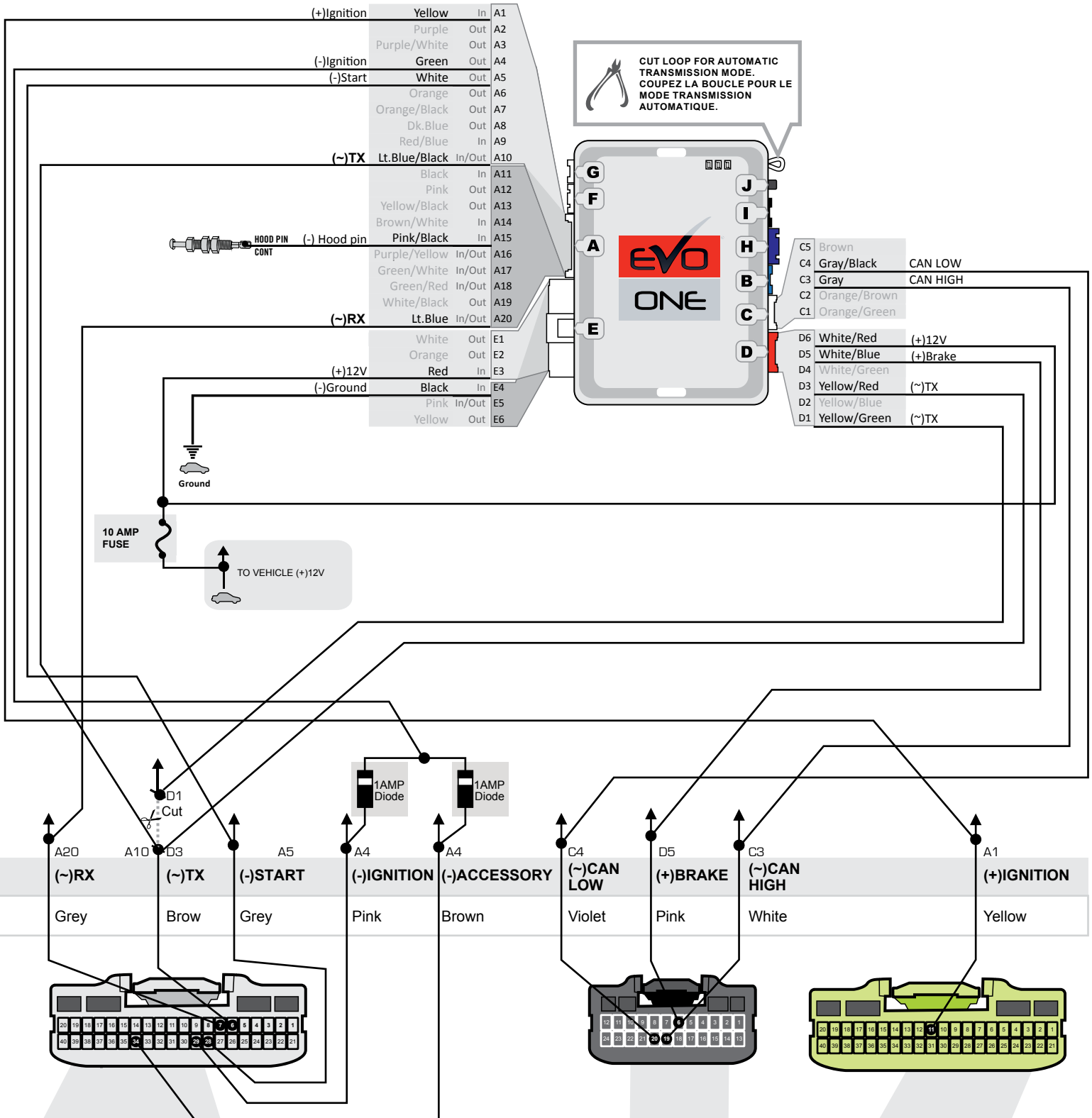


FLASH LINK UPDATER 2

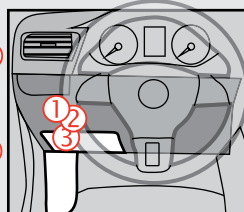
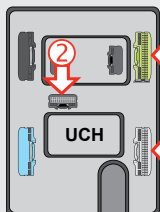
- 1X Microsoft Windows Computer & Internet connection



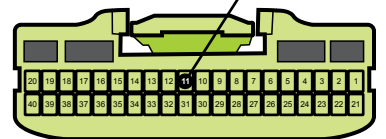
WIRING CONNECTION



① Back View 40-pins Grey connector



② Back View 24-pins Black connector

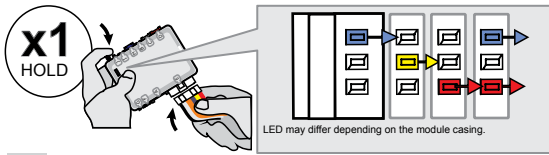


③ Back View 40-pins Green connector

At UCH, under Dashboard, driver side

KEY BYPASS PROGRAMMING PROCEDURE 1/2

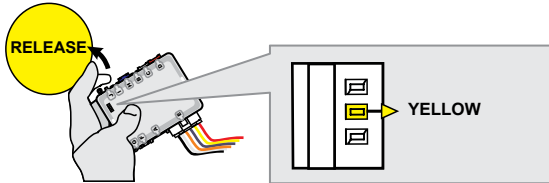
1



Press and hold the programming button:
Connect the 6-PIN Main harness (White connector).

↳ The Blue, Red, Yellow and Blue & Red LEDs will alternatively illuminate.

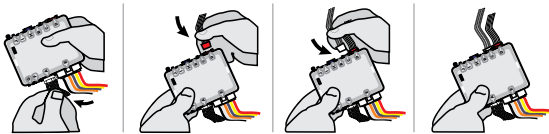
2



Release the programming button when the LED is **YELLOW**.

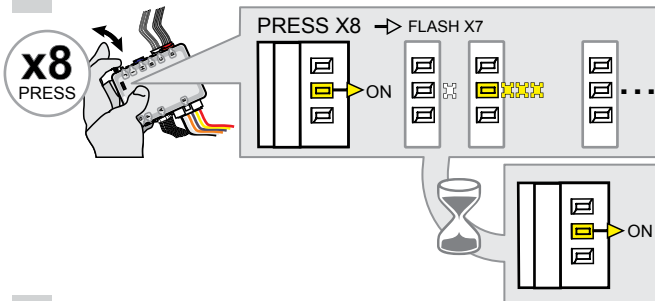
If the LED is not solid **YELLOW** **disconnect** the 6-Pin connector (Main-Harness) and go back to step 1.

3



Insert the required remaining connectors.

4

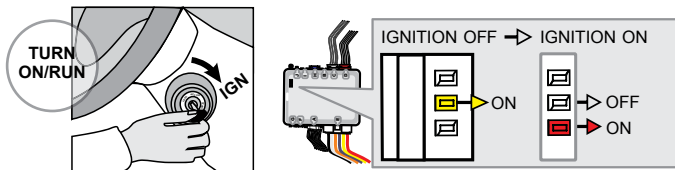


Press and release the programming button 8 times (8x).

↳ The **YELLOW** LED will alternate between 7x flashes and a pause.

↳ Wait until the **YELLOW** LED turns ON.

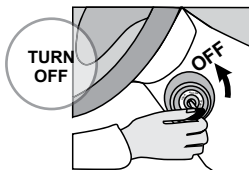
5



Turn the Ignition to the ON/RUN position.

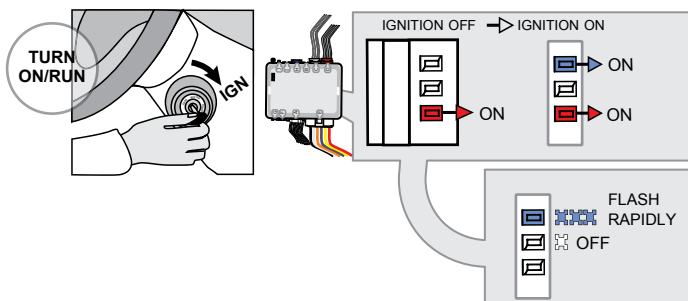
↳ The **RED** LED will turns ON.
↳ The **YELLOW** LED turns OFF.

6



Turn the Ignition to the OFF position.

7



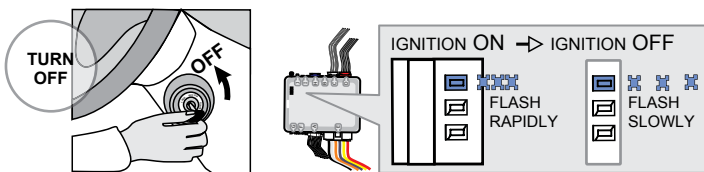
Turn the Ignition to the ON/RUN position.

↳ The **RED** LED will turns OFF.

↳ The **BLUE** LED will Flash rapidly.

KEY BYPASS PROGRAMMING PROCEDURE 2/2

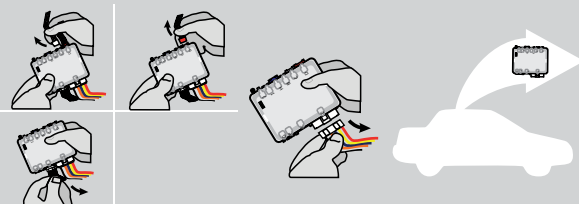
8



Turn the Ignition to the OFF position.

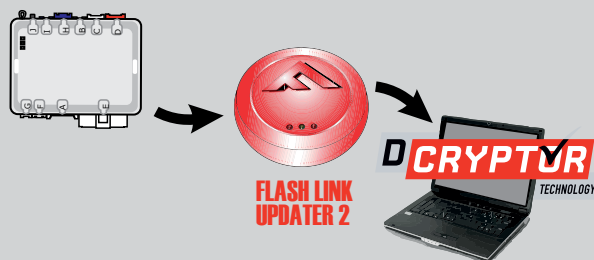
↳ the **BLUE LED** flash slowly.

9



Disconnect all connectors and after the 6-Pin (Main-Harness) connector.

10



Connect the module to the FLASH LINK UPDATER 2 and visit the DCryptor menu in the Flash-Link Manager.

Parts required (not included)



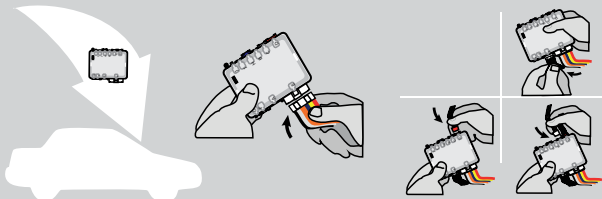
FLASH LINK UPDATER 2

FLASH LINK MANAGER
SOFTWARE



Microsoft Windows Computer with Internet connection

11



AFTER DCRYPTOR PROGRAMMING COMPLETED
Go back to the vehicle and **reconnect** the 6-Pin (Main-Harness) connector and after all the remaining connector.

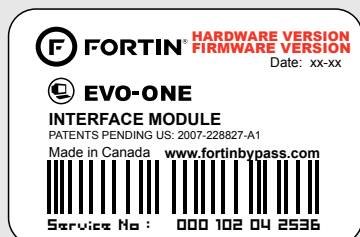


The module is now programmed.



REMOTE STARTER / ALARM VERIFICATION PROCEDURE

Test the remote starter. Remote start the vehicle.



Module label

Notice: Updated Firmware and Installation Guides

Updated firmware and installation guides are posted on our web site on a regular basis. We recommend that you update this module to the latest firmware and download the latest installation guide(s) prior to the installation of this product.

WARNING

The information on this sheet is provided on an (as is) basis with no representation or warranty of accuracy whatsoever. It is the sole responsibility of the installer to check and verify any circuit before connecting to it. Only a computer safe logic probe or digital multimeter should be used. FORTIN ELECTRONIC SYSTEMS assumes absolutely no liability or responsibility whatsoever pertaining to the accuracy or currency of the information supplied. The installation in every case is the sole responsibility of the installer performing the work and FORTIN ELECTRONIC SYSTEMS assumes no liability or responsibility whatsoever resulting from any type of installation, whether performed properly, improperly or any other way. Neither the manufacturer or distributor of this module is responsible of damages of any kind indirectly or directly caused by this module, except for the replacement of this module in case of manufacturing defects. This module must be installed by qualified technician. The information supplied is a guide only. This instruction guide may change without notice. Visit www.fortinbypass.com to get the latest version.

Copyright © 2006-2014, FORTIN AUTO RADIO INC ALL RIGHTS RESERVED PATENT PENDING



TECH SUPPORT

Tél: 514-255-HELP (4357)
1-877-336-7797



ADDENDUM GUIDE

www.fortinbypass.com

WEB UPDATE

