

REVOSTART™

REVO-1 & REVO-4 SERIES

1 - Way Remote Start System

INSTRUCTIONS

CONGRATULATIONS on your choice of a Crimestopper Revo Start 1-Way Remote Start System. This system is an RF Antenna Decoder that plugs directly into a Fortin or ADS Data module. No additional remote start module is needed. The features of the system, depends on the vehicle and data module used. This system requires a Fortin or ADS data module with a programmer to load correct vehicle software. You will need the vehicle install guide from Fortin or ADS iDatalink website. Many vehicles have a “Plug n Play” T harness available to simplify the installation. The remotes need to be programmed after installation of data module before operation. If any questions arise, contact your installation dealer or Crimestopper Security Products.

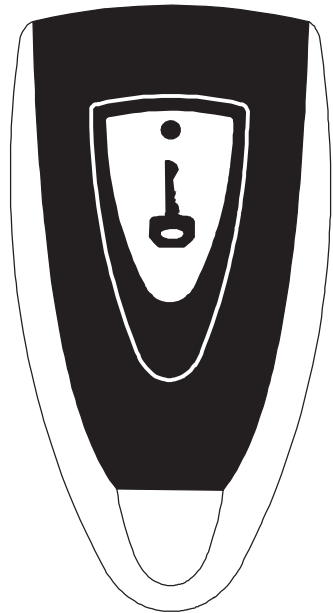
CRIMESTOPPER

CRIMESTOPPER SECURITY PRODUCTS
600 S. ROCKFORD DR., TEMPE, AZ 85281

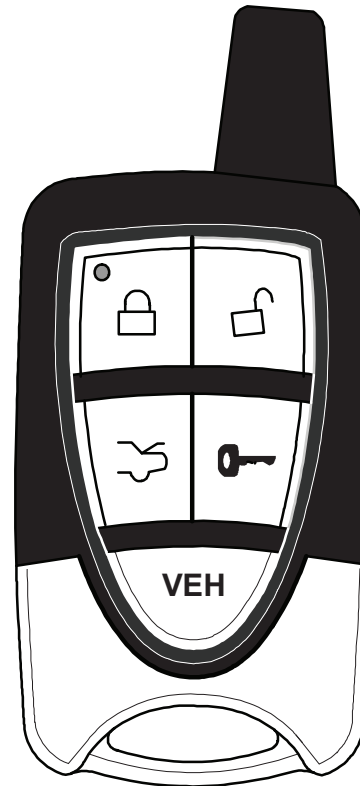
This device complies with FCC Rules part 15. Operation is subject to the following two conditions: 1) This device may not cause interference, and (2) this device must accept any interference that may be received, including interference that may cause undesired operation. The manufacturer is not responsible for any radio or TV interference caused by unauthorized modification to this equipment. Such modification could void the user's authority to operate the equipment.

REV 09-2015

USING THE REMOTE TRANSMITTER



REVO-1 Series



**ARM /
LOCK**

TRUNK

**VEH 1 = Blue LED
VEH 2 = Red LED**

**DISARM /
UNLOCK**

START

**VEHICLE
SELECT**

REVO-4

Aux Channels

- AUX 1 = Trunk + Lock**
- AUX 2 = Trunk + Unlock**
- AUX 3 = Trunk + Start**
- AUX 4 = Lock + Start**

For REVO-1 Series

The transmitter supplied has one Start button.

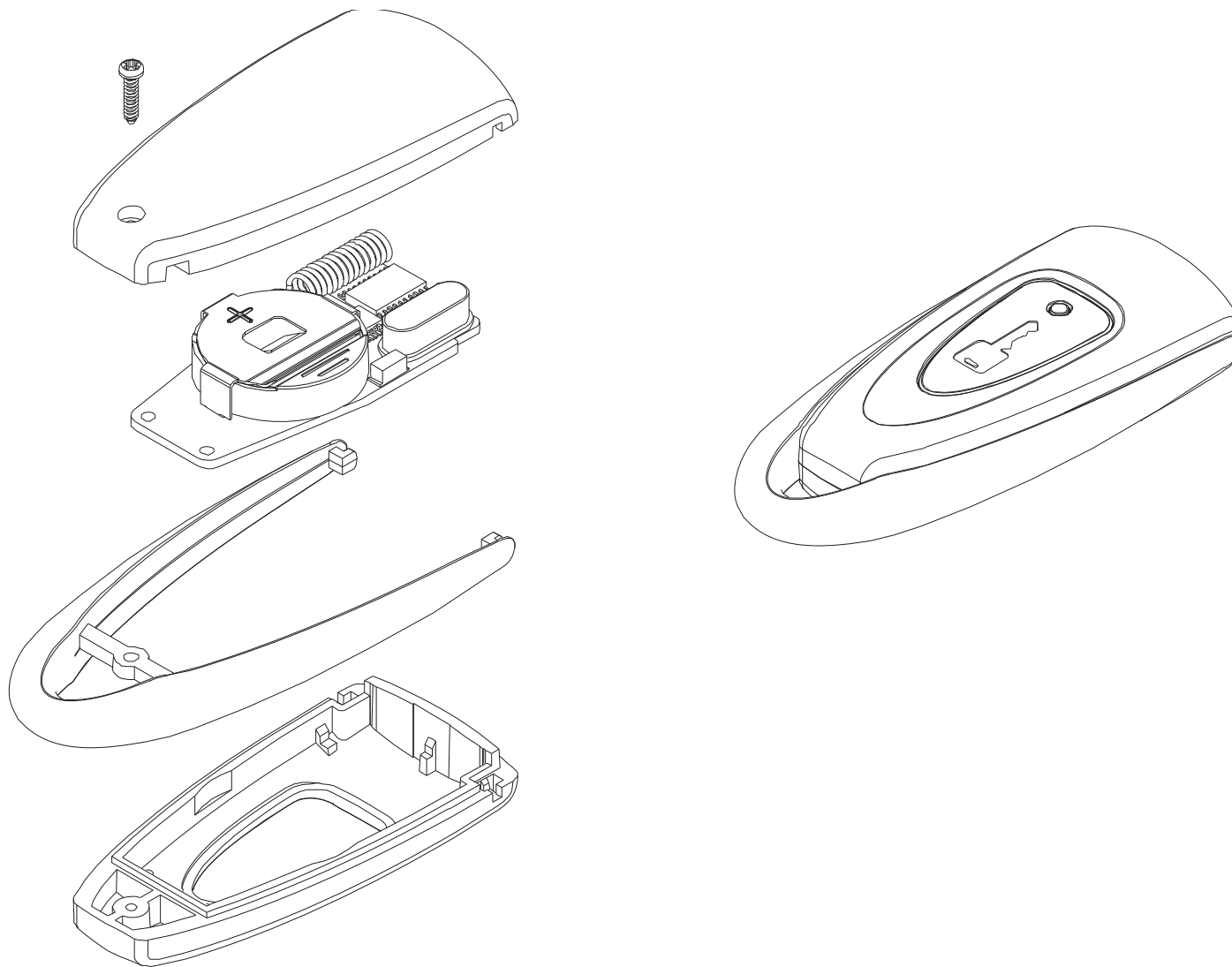
For REVO-4 Series

The transmitter supplied with this system has 5 buttons - Lock, Unlock, Trunk Release, Vehicle Select and Start. This remote can control up to 4 AUX functions thru data depending on the vehicle and data module. This is typically used for operating the left and right sliding doors and Gas Cap release. Consult with your installer about the optional AUX functions.

BATTERY REPLACEMENT

To replace the battery on a REVO 1 Series 1 button remote:

Simply remove the screw on the back of the transmitter and slide the cas apart as shown. Remove the (2) CR-1620 Lithium batteries and replace. Put the case back together and tighten the screw.



BATTERY REPLACEMENT

To Replace the Batteries in the REVO 4 Series

The Remote Control uses two CR-2025 Lithium 3 Volt Batteries. Simply remove the Phillips screw located behind key ring (see diagram below). Use a small screw driver as shown in Figure 2 to remove the back cover. Slide old batteries out. Insert the new batteries into plastic cover and slide into place with the (+) end facing up. The plastic cover keeps the batteries from shorting out against the side of metal housing.



Fig. 1



Fig. 2

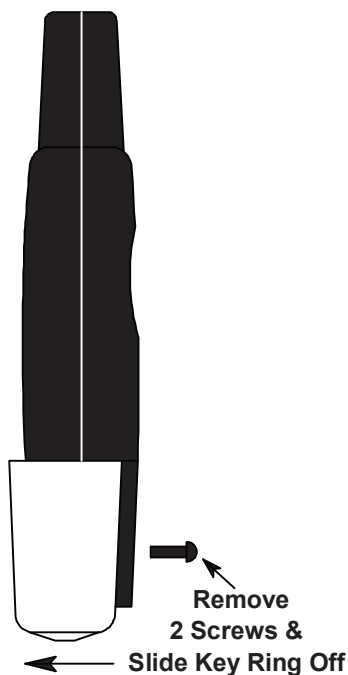
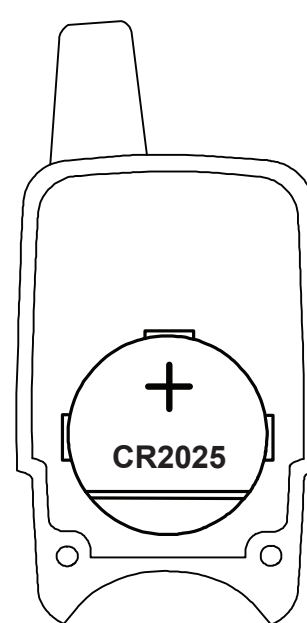


Fig. 3



TRANSMITTER PROGRAMMING

**Note: Programming of the Data Module to the vehicle must be completed FIRST!
The system can learn up to 4 different transmitter codes.**

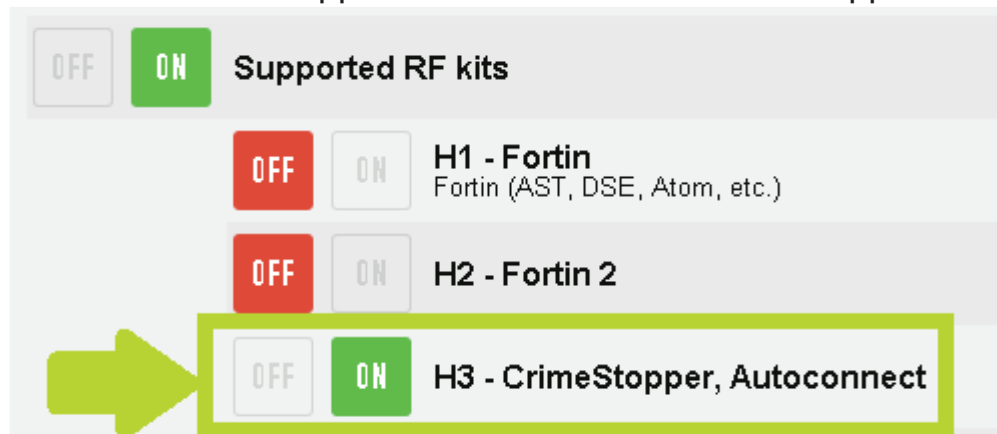
There are 3 methods of programming remotes depending on the type of Data Module used to operate your vehicle.

ADS iDataLink Programming:

1. Insert the key into the ignition, if you have a proximity key just be sure you can start the vehicle.
2. **This step must be completed within 7 seconds:** Cycle the ignition (5) times with the 5th time leaving it in the ON position.
3. The parking lights will flash (1) time (this is only if the parking lights are offered through the integration module or if connected via an output from the module) confirming you have entered the remote learning sequence.
4. **This step must be completed in 5 seconds:** Press the Start button on the REVO-1 or Lock button on the REVO-4 on the remotes you want to program.
5. The Parking lights will flash (1) time for each remote paired. (This is only if the parking lights are offered through the integration module or if connected via an output from the module)
6. The system will automatically exit the remote learning procedure after (5) seconds of inactivity or by turning the ignition off. The parking lights will flash (2) times to confirm programming exit.

Fortin EVO-ALL Programming:

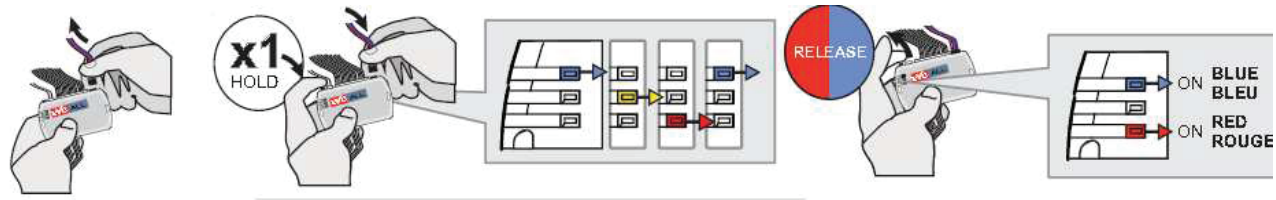
Note: The EVO-ALL must have the CrimeStopper RF kit enabled under the Supported RF kits menu.



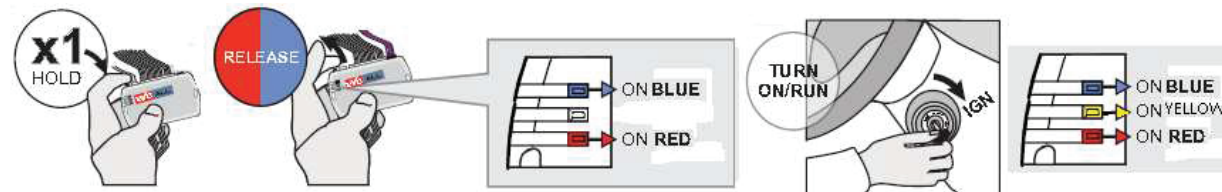
TRANSMITTER PROGRAMMING

Fortin EVO-ALL Programming (cont'd):

1. Press and hold the programming button on the EVO-ALL.
2. Insert the 4-pin Data-Link connector that comes with the EVO-ALL into the open 4-pin power on the power adaptor next to the 2-pin power/ground harness.



3. After the Blue and Red LED's turn on simultaneously, release the programming button.
4. Press and hold the programming button on the EVO-ALL for (5) seconds. The Blue and Red LED's will turn OFF and back ON after (5) seconds. After the LED's turn back ON release the programming button.
5. Turn the ignition ON. The yellow LED will turn ON.



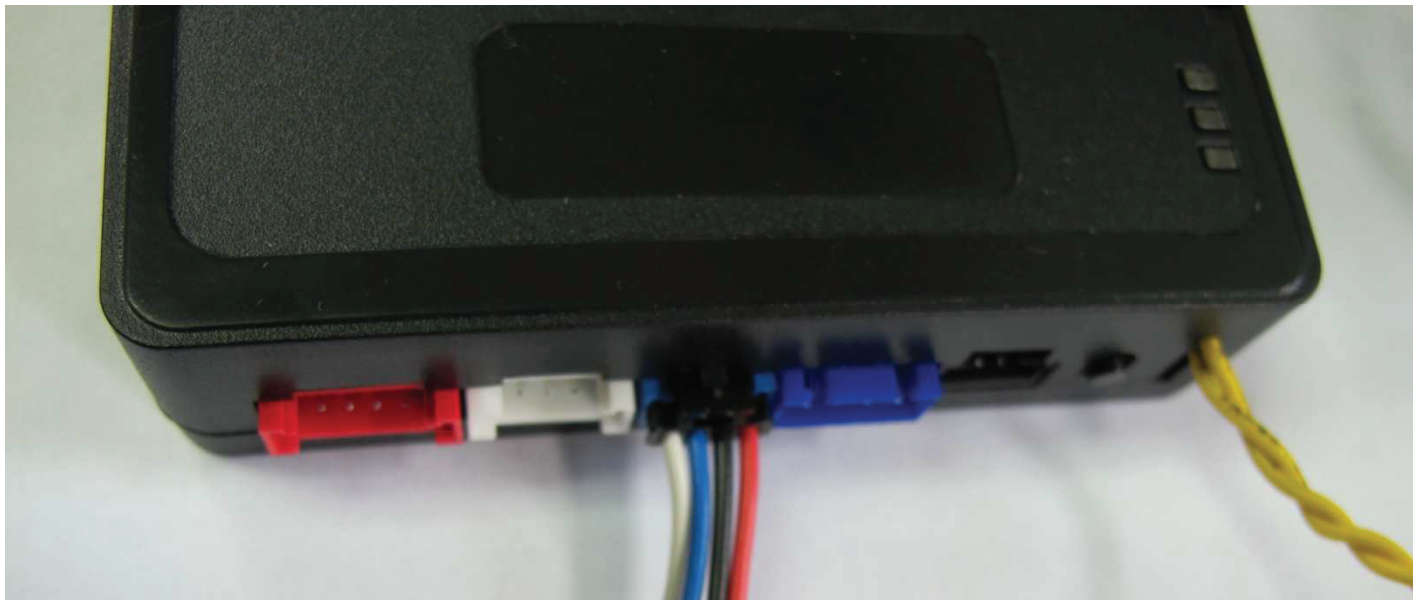
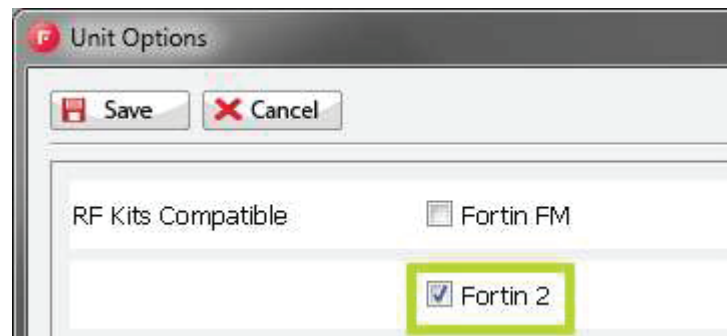
6. Press the Start button on the REVO-1 or the Lock button on the REVO-4, you may have to hold the button for up to 3 seconds. The Blue and Red LED's will flash (1) time to confirm that the remote has coded. Repeat this step for each remote you want coded. You can have up to (4) remotes at a time.
7. Turn the ignition off to exit remote programming.

TRANSMITTER PROGRAMMING

Fortin EVO-ONE Programming:

Note: Before you save your settings for programming of the EVO-ONE, ensure that you have Fortin 2 checked on the remote starter options menu. Then save, disconnect and program the EVO-ONE to the vehicle.

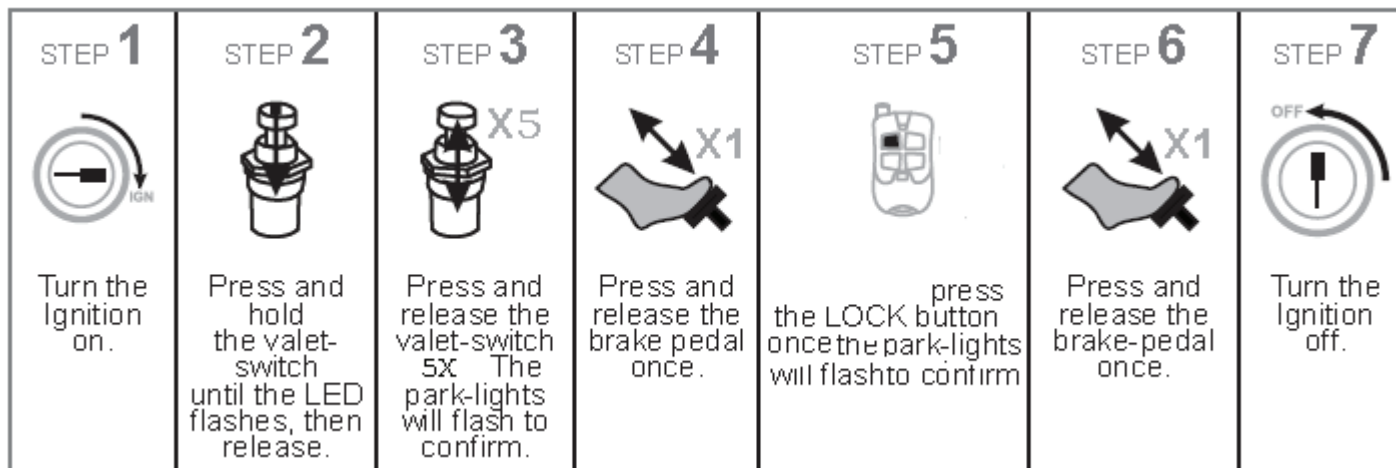
1. Using the antenna cable that comes with the REVO kit, plug 1 end into the antenna and the other into the RF port of the EVO-ONE. The RF port is the Blue 4-pin port next to the White port on the EVO-ONE. You will not need to connect the power adaptor that comes with the REVO kit. NOTE: There are (2) Blue ports next to each other. Be sure to use the Blue port furthest from the programming button.



TRANSMITTER PROGRAMMING

Fortin EVO-ONE Programming (cont'd):

2. Turn the Ignition to the ON position, do not start the vehicle. Press and hold the programming button until the Red LED flashes in the opening where the yellow wires come out. None of the LED's on top of the module should be flashing.
3. Release the programming button.
4. Press and release the programming button (5) times.
5. Press and release the brake pedal once.

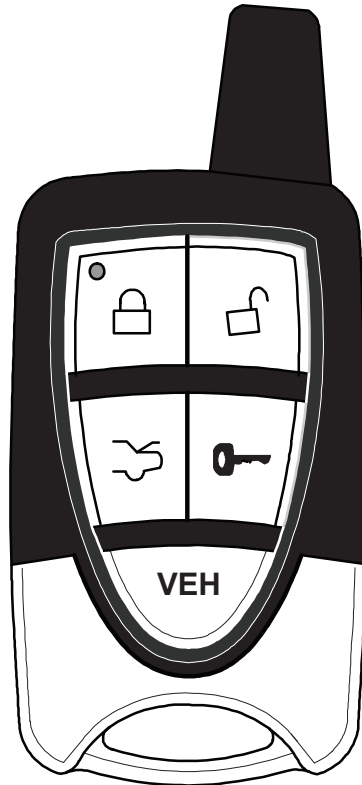


6. Press the Start button on the REVO-1 or the Lock button on the REVO-4, you may have to hold the button for up to 3 seconds. The Red LED will flash (1) time to confirm that the remote has coded. Repeat this step for each remote you want coded. You can have up to (4) remotes at a time.
7. Turn OFF the ignition to exit programming.

2 VEHICLE OPERATION

A single Remote Control can control two different vehicles.

To set up the 2-Vehicle operation you must first program your remotes to Vehicle #2. Follow the “Transmitter Programming” steps (Pg. 6 - 9) at the second vehicle and learn YOUR remote, along with vehicle #2’s existing remotes.



VEH 1 = Blue LED
VEH 2 = Red LED

REVO-4 Series

To change from Vehicle 1 to Vehicle 2, press the **VEH** button on the remote for about 2 seconds. The LED on the remote will change from **Blue to Red**. The **VEH** button can be used to keep the remote control from accidentally operating your vehicle.

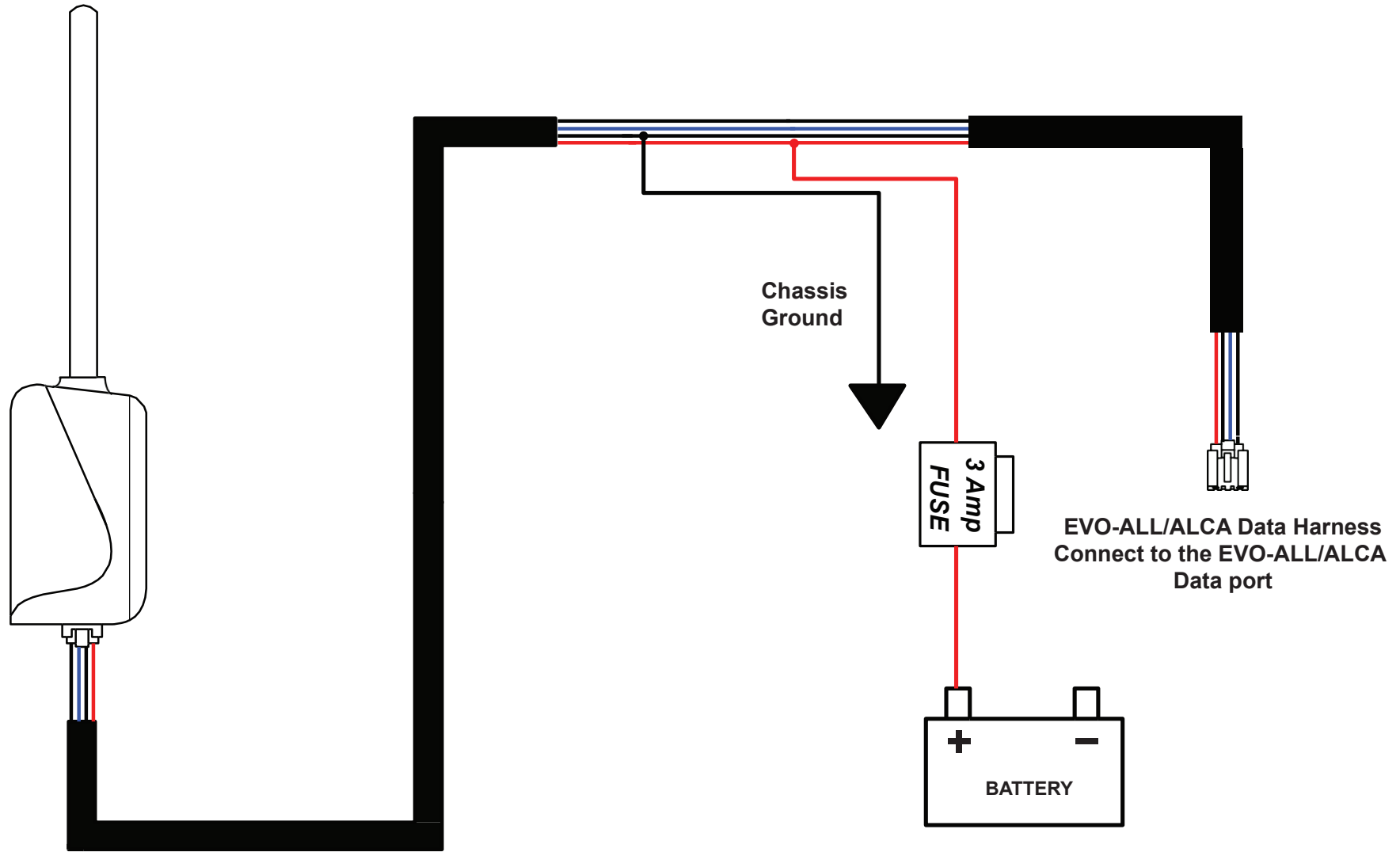
POWER ADAPTOR WIRING

NOTE: The power connections are only needed for the EVO-ALL and ADS-ALCA integration modules. The EVO-ONE will not require these connections. If you are using a T-Harness with the EVO-ONE or ADS modules then you will NOT need to connect the power and ground connections. If you are NOT using a T-Harness, then you WILL need to connect the power and ground wires. These wires will supply the power to the module as well as the REVO antenna.

Connect the Red wire from the 2-pin power adaptor to a 12V constant source.

Connect the Black wire from the 2-pin power adaptor to a paint free, solid metal surface using a crimped on ring terminal and self-tapping screw. For best results, use a nutsert and bolt.

POWER ADAPTOR WIRING



A T-Harness will usually supply power from the vehicle to the REVO antenna and the EVO-ALL data module. The power and ground wiring is only used with the REVO series when you ARE NOT using a T-Harness to connect to the EVO-ALL data module to the vehicle.

CRIMESTOPPER



www.crimestopper.com
email cs.techsupport@rockfordcorp.com
Phone (800) 998-6880
Fax (800) 366-6724

© 2015 CrimeStopper Security Products