



DEI SMARTSTART DSM 550

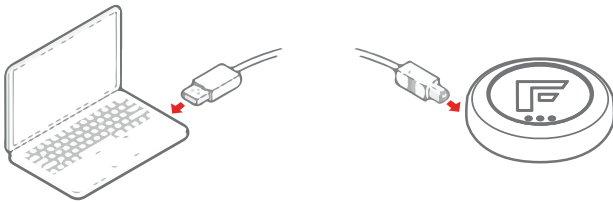
GUIDE # 87531 - REV.: 20190527



Parts required (not included):

- 1x DATA-LINK, FD-DATA cable
- 1x FLASH-LINK UPDATER
- 1x Microsoft Windows Computer with Internet connection

1



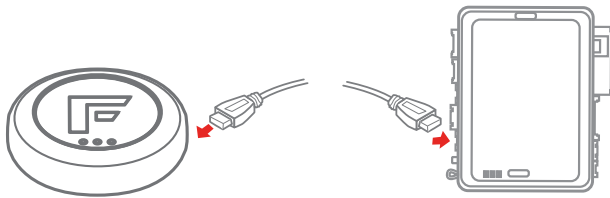
Plug in the **FLASH-LINK UPDATER** into the computer's USB port with the provided USB cable.

2



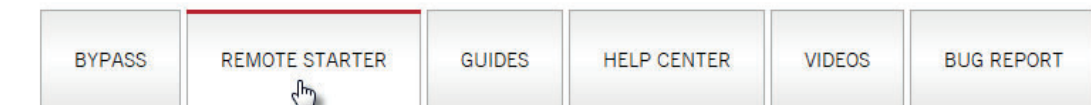
Run Flash Link Manager Software.

3



Plug in the **EVO-ONE** into the **FLASH-LINK UPDATER** with provided DATALINK cable.

4



CLICK on the remote starter tab.

BYPASS

REMOTE STARTER

FIRMWARE

FIRMWARE INSIDE 1.[24]
HARDWARE INSIDE 7.0

VIEW OTHER FIRMWARES

RECOMMENDED FIRMWARE IS LOADED

✓ 1.[24]
RECOMMENDED

5

CLICK on VIEW OTHER FIRMWARE, scroll down and select and flash version **0.83 FOR DSM 550**.

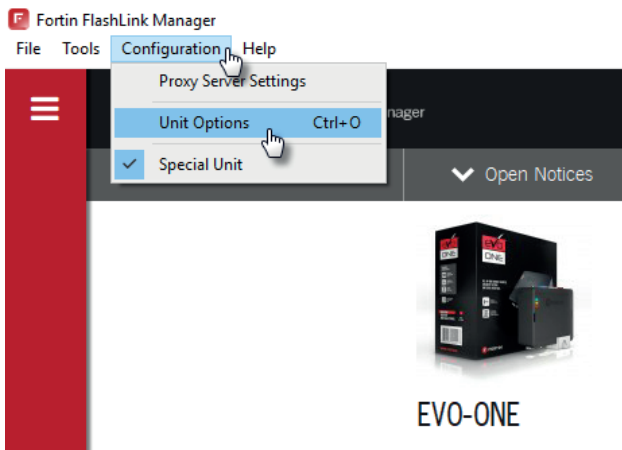
UPDATE TO VERSION 0.[83]

You are about to change the firmware of your device to **Version 0.[83]**.



6

CLICK on CONFIRM.

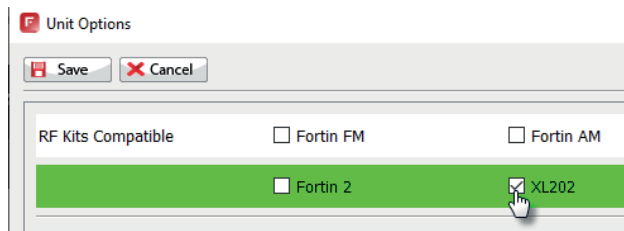


7

Once the flashing is done,

CLICK on **CONFIGURATION** then **UNIT OPTIONS**.

8

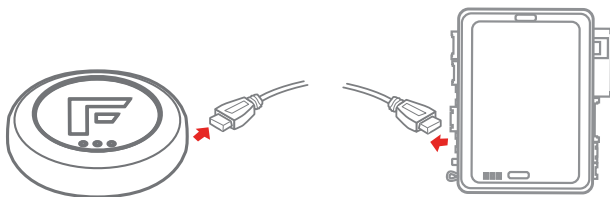


SELECT XL202,

CLICK SAVE,

wait for the window to disappear

9



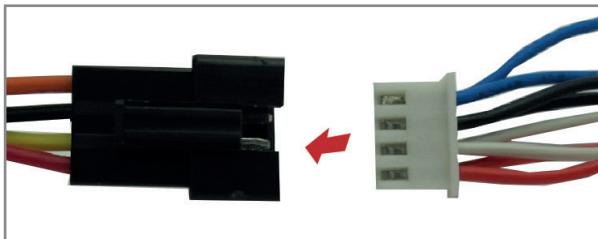
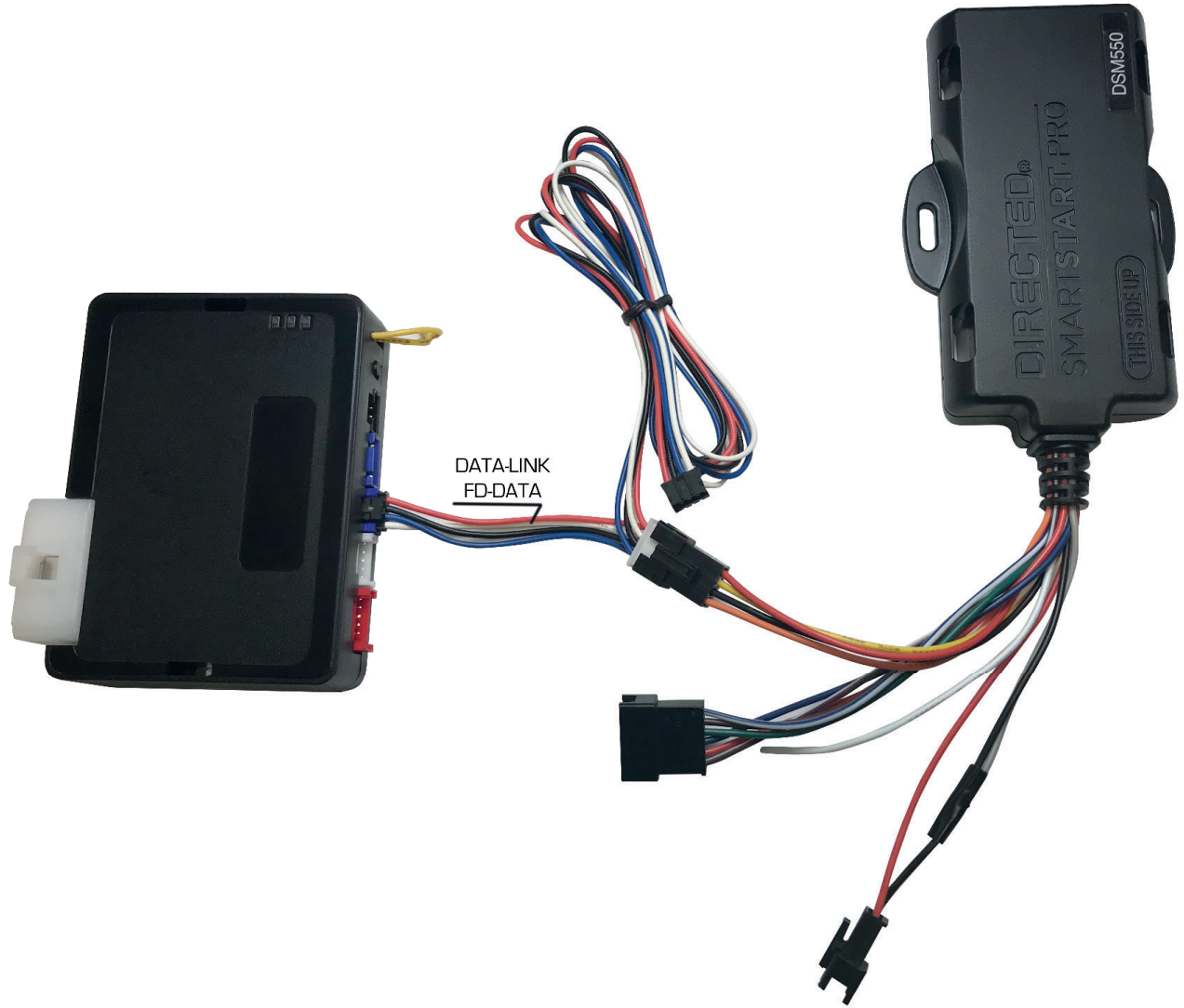
Disconnect the EVO-ONE.

10



GROUND the DEI SmartStart Grey wire as shown.

11



CONNECT the SmartStart and the EVO-ONE together with the **FD-DATA** cable (Sold separately).

12

Wait until the SmartStart initialize and connect to the network. Can take up to a minute.



WARNING

NOTICE The manufacturer will accept no responsibility for any electrical damage resulting from improper installation of the product, including either damage to the vehicle itself or to the remote-starter module. This module must be installed by a certified technician including all of the supplied safety devices. Please note that this guide has been written for trained professional technicians, a certain level of skills and knowledge is therefore assumed.

Neither the manufacturer or distributor of this module is responsible of damages of any kind indirectly or directly caused by this module, except for the replacement of this module in case of manufacturing defects. This module must be install by qualified technician. This instruction guide may change without notice.

To download the installation guide, user guide, or the latest quick installation guide, visit: www.fortin.ca

Technical support: TEL: 514-255-4357 / 1-877-336-7797

Copyright © 2019, FORTIN AUTO RADIO INC ALL RIGHTS RESERVED MADE IN CANADA

REV.:20190517